

Grant Community High School
Grant CHSD 124
Fox Lake, ILLINOIS



ILLINOIS
SCHOOL
REPORT
CARD

GRADES : 9 10 11 12

State and federal laws require public school districts to release report cards to the public each year.

This year, we have updated the report card to provide a full picture of school performance beyond just test scores. A display of this data designed with parents and communities in mind is available on illinoisreportcard.com. All of the metrics posted on illinoisreportcard.com are also included in this report.

STUDENTS

RACIAL/ETHNIC BACKGROUND AND OTHER INFORMATION												
	White	Black	Hispanic	Asian	Native Hawaiian /Pacific Islander	American Indian	Two or More Races	Percent Low-Income	Percent Limited-English-Proficient	Percent IEP	Percent Homeless	Total Enrollment
School	63.8	4.8	22.8	4.4	0.2	0.1	4.0	32.2	1.2	11.3	0.7	1,912
District	63.8	4.8	22.8	4.4	0.2	0.1	4.0	32.2	1.2	11.3	0.7	1,912
State	48.8	17.3	25.5	4.7	0.1	0.3	3.2	49.9	10.5	14.3	2.2	2,041,779

Low-income students come from families receiving public aid; live in institutions for neglected or delinquent children; are supported in foster homes with public funds; or are eligible to receive free or reduced-price lunches. IEP Students are those students eligible to receive special education services.

Limited-English-proficient students are those students eligible for transitional bilingual programs. **Total Enrollment** is based on Home School. **Homeless** students are who do not have permanent and adequate homes.

	High Sch. Dropout Rate	Chronic Truancy Rate	Mobility Rate	Attendance Rate
School	1.2	1.8	7.0	94.1
District	1.2	1.8	7.0	94.1
State	2.0	9.8	12.2	94.4

Mobility rate is based on the number of times students enroll in or leave a school during the school year.

Chronic truants are students who are absent from school without valid cause for 9 or more of the last 180 school days.

INSTRUCTIONAL SETTING

PARENTAL CONTACT*	
	Percent
School	100.0
District	100.0
State	95.3

TOTAL SCHOOL DAYS	
	Days
School	177
District	177
State	175

8TH GRADERS PASSING ALGEBRA I **	
School	
District	
State	28.4

** For the 8th graders passing algebra I, if the percentage is 0, it means that an Algebra I course is not offered.

* Parental contact includes parent-teacher conferences, parental visits to school, school visits to home, telephone conversations, and written correspondence.

STUDENT-TO-STAFF RATIOS			
Pupil-Teacher Elementary	Pupil-Teacher Secondary	Pupil-Certified Staff	Pupil-Administrator
--	--	--	--
	19.4	13.3	131.9
	18.9	11.3	176.5

HEALTH AND WELLNESS (days per week)	
School	5.0
District	5.0
State	4.0

AVERAGE CLASS SIZE (as of the first school day in May)											
Grades	K	1	2	3	4	5	6	7	8	9 - 12	Overall
School										19.3	19.3
District										19.3	19.3
State										19.0	21.1

TEACHER INFORMATION (Full-Time Equivalents)												
	White	Black	Hispanic	Asian	Native Hawaiian/ Pacific islander	American Indian	Two or More Races	Unknown	Male	Female	Total Number	
District	97.7	0.0	1.3	0.0	0.0	0.0	0.0	1.0	51.4	48.6	104	
State	83.4	6.0	5.7	1.4	0.1	0.2	0.8	2.5	23.3	76.7	127,152	

TEACHER INFORMATION (Continued)			
	Average Teaching Experience (Years)	% of Teachers with Bachelor's Degrees	% of Teachers with Master's & Above
School	--	--	--
District	11.9	20.2	79.8
State	13.1	38.1	61.4

Poverty (low-income) is defined on page 1 of all report cards. High- and low-poverty schools include those in the top and bottom quarters of the poverty distribution of schools in the state.

Some teacher/administrator data are not collected at the school level.

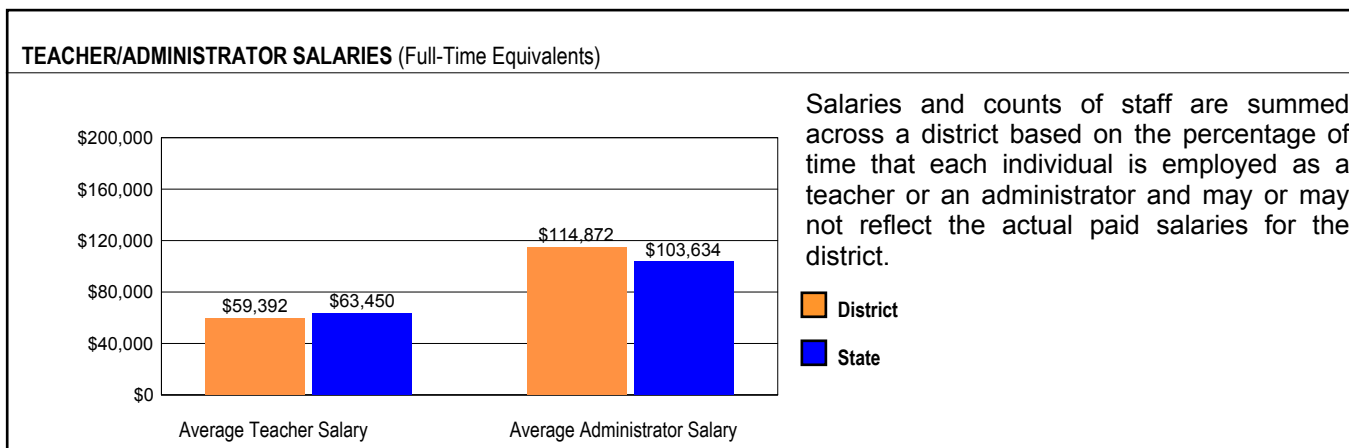
TEACHER RETENTION RATE	
School	91.3
District	91.3
State	85.8

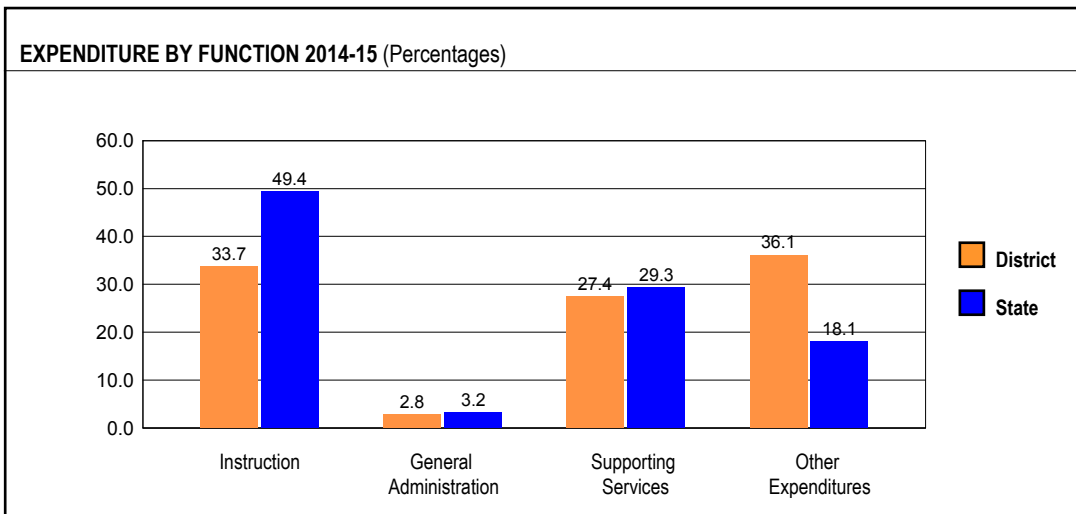
PRINCIPAL TURNOVER (Count)	
School	2.0
District	2.0
State	2.0

TEACHER ATTENDANCE	
School	83.2
District	83.2
State	76.5

Percentage of teachers absent 10 or fewer days
Data from 2013-14 Office of Civil Rights Data Collection, published June 2016

SCHOOL DISTRICT FINANCES





REVENUE BY SOURCE 2014-15				EXPENDITURE BY FUND 2014-15			
	District	District %	State %		District	District %	State %
Local Property Taxes	\$25,060,044	82.3	62.8	Education	\$18,630,126	57.2	73.4
Other Local Funding	\$1,091,635	3.6	4.6	Operations & Maintenance	\$4,671,069	14.3	6.4
General State Aid	\$2,022,229	6.6	16.3	Transportation	\$1,606,253	4.9	3.7
Other State Funding	\$1,342,381	4.4	8.6	Debt Service	\$5,955,100	18.3	8.1
Federal Funding	\$931,248	3.1	7.7	Tort	\$0	0.0	1.3
TOTAL	\$30,447,537			Municipal Retirement/ Social Security	\$694,972	2.1	2.1
				Fire Prevention & Safety	\$0	0.0	0.5
				Capital Projects	\$1,025,231	3.1	4.7
				TOTAL	\$32,582,751		

OTHER FINANCIAL INDICATORS				
	2013 Equalized Assessed Valuation per Pupil	2013 Total School Tax Rate per \$100	2014-15 Instructional Expenditure per Pupil	2014-15 Operating Expenditure per Pupil
District	\$425,370	3.25	\$6,252	\$12,455
State	**	**	\$7,712	\$12,821

** Due to the way Illinois school districts are configured, state averages for equalized assessed valuation per pupil and total school tax rate per \$100 are not provided.

Equalized assessed valuation includes all computed property values upon which a district's local tax rate is calculated.

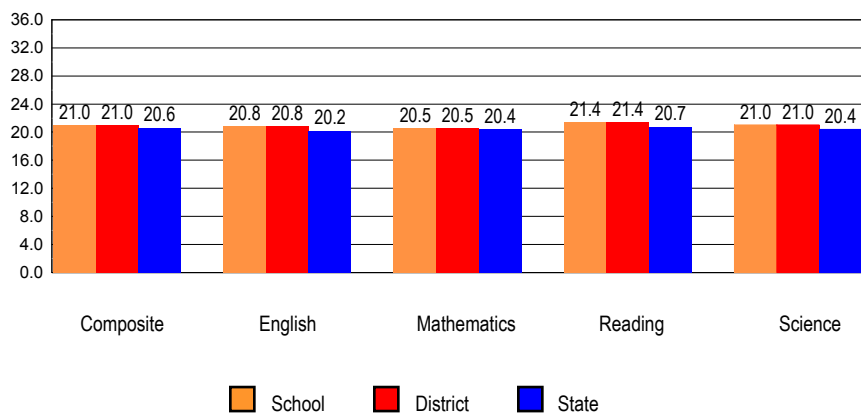
Total school tax rate is a district's total tax rate as it appears on local property tax bills.

Instructional expenditure per pupil includes the direct costs of teaching pupils or the interaction between teachers and pupils.

Operating expenditure per pupil includes the gross operating cost of a school district excluding summer school, adult education, bond principal retired, and capital expenditures.

ACADEMIC PERFORMANCE

ACT ASSESSMENT: GRADUATING CLASS OF 2016 *



The number and percent of students taking the ACT are no longer reported since virtually every eleventh grade student takes the ACT as part of the PSAE.

* Includes graduating students' most recent ACT Assessment scores from an ACT national test date or PSAE testing. All students whose scores are college reportable, both standard and extended time tests, are now included. State averages for ACT data are based on regular public schools and do not include private and special purpose schools.

READY FOR COLLEGE COURSE WORK	
School	49.9
District	49.9
State	46.4

PERCENT OF STUDENTS MET ACT BENCHMARKS					
	English	Math	Read	Science	ALL 4 Subjects
School	70.3	40.3	44.7	36.8	24.4
District	70.3	40.3	44.7	36.8	24.4
State	61.9	39.7	40.3	34.3	25.1

COLLEGE ENROLLMENT		
	12 Months	16 Months
School	74.0	76.0
District	74.0	76.0
State	67.8	71.4

FRESHMEN ON TRACK	
School	90.0
District	90.0
State	82.4

CTE ENROLLMENT	
School	717
District	717
State	280,517

ADVANCED COURSE WORK (AP/IB/DUAL CREDIT)			
	GRADE 10	GRADE 11	GRADE 12
School	59	169	212
District	59	169	212
State	28,457	54,910	70,923

ADVANCED PLACEMENT (AP) COURSE WORK			
Levels	Grade10	Grade11	Grade12
All			
School	59	142	160
District	59	142	160
State	21,667	40,133	50,356
White			
School	33	94	114
District	33	94	114
State	12,468	23,421	28,922
Black			
School	1	6	3
District	1	6	3
State	1,581	3,342	4,505
Hispanic			
School	13	31	21
District	13	31	21
State	3,839	8,233	10,844
Asian			
School	4	8	13
District	4	8	13
State	2,971	3,835	4,549
Native Hwaiian/Pacific Islander			
School	0	0	0
District	0	0	0
State	31	40	58
American Indian			
School	0	0	0
District	0	0	0
State	58	76	110
Two or More Races			
School	8	3	9
District	8	3	9
State	719	1,186	1,368
LEP			
School	0	0	0
District	0	0	0
State	68	197	286
Non LEP			
School	59	142	160
District	59	142	160
State	21,599	39,936	50,070
IEP			
School	0	1	1
District	0	1	1
State	184	504	873
Non IEP			
School	59	141	159
District	59	141	159
State	21,483	39,629	49,483

Low Income			
School	9	28	34
District	9	28	34
State	5,270	10,910	14,384
Non Low Income			
School	50	114	126
District	50	114	126
State	16,397	29,223	35,972

DUAL CREDIT COURSE WORK			
Levels	Grade10	Grade11	Grade12
All			
School	0	28	68
District	0	28	68
State	7,337	17,215	29,739
White			
School	0	21	46
District	0	21	46
State	4,262	11,960	20,330
Black			
School	0	0	0
District	0	0	0
State	1,107	1,668	2,746
Hispanic			
School	0	7	15
District	0	7	15
State	1,522	2,442	4,548
Asian			
School	0	0	4
District	0	0	4
State	240	622	1,250
Native Hawaiian/Pacific Islander			
School	0	0	0
District	0	0	0
State	6	18	37
American Indian			
School	0	0	0
District	0	0	0
State	17	33	79
Two or More Races			
School	0	0	3
District	0	0	3
State	183	472	749
LEP			
School	0	0	1
District	0	0	1
State	182	201	237
Non LEP			
School	0	28	67
District	0	28	67
State	7,155	17,014	29,502
IEP			
School	0	2	6
District	0	2	6
State	774	1,382	2,245
Non IEP			

School	0	26	62
District	0	26	62
State	6,563	15,833	27,494
Low Income			
School	0	9	20
District	0	9	20
State	3,390	5,855	9,056
Non Low Income			
School	0	19	48
District	0	19	48
State	3,947	11,360	20,683

ADVANCE PLACEMENT (AP) EXAMS**GRADE 10**

	No of AP Exams Taken	No of AP Exams Passed	Took One or More AP Exams	Passed One or More AP Exams
School	58	39	52	34
District	58	39	52	34
State	26,796	17,202	19,158	12,498

GRADE 11

	No of AP Exams Taken	No of AP Exams Passed	Took One or More AP Exams	Passed One or More AP Exams
School	288	201	113	90
District	288	201	113	90
State	88,794	57,291	34,932	23,741

GRADE 12

	No of AP Exams Taken	No of AP Exams Passed	Took One or More AP Exams	Passed One or More AP Exams
School	405	328	114	98
District	405	328	114	98
State	155,180	102,273	38,306	28,190

POST-SECONDARY REMEDIATION (CLASS OF 2014)

School	62.0
District	62.0
State	49.4

HIGH SCHOOL 4-YEAR GRADUATION RATE														
	Gender			Race / Ethnicity							LEP	Migrant	Students with Disabilities	Economically Disadvantaged
	All	Male	Female	White	Black	Hispanic	Asian	Native Hawaiian/Pacific Islander	American Indian	Two or More Races				
School	93.5	90.0	96.8	95.6	100.0	85.4	95.0			88.9	70.0		78.4	87.6
District	93.5	90.0	96.8	95.6	100.0	85.4	95.0			88.9	70.0		78.4	87.6
State	85.5	83.0	88.1	90.4	74.6	81.3	93.6			84.7	71.9		70.6	76.7

HIGH SCHOOL 5-YEAR GRADUATION RATE														
	Gender			Race / Ethnicity							LEP	Migrant	Students with Disabilities	Economically Disadvantaged
	All	Male	Female	White	Black	Hispanic	Asian	Native Hawaiian/Pacific Islander	American Indian	Two or More Races				
School	91.1	90.5	91.7	91.7	81.3	88.2	95.7				90.0		57.6	88.4
District	91.1	90.5	91.7	91.7	81.3	88.2	95.7				90.0		57.6	88.4
State	87.7	85.4	90.2	91.4	79.2	84.2	95.5				77.8		75.1	81.8

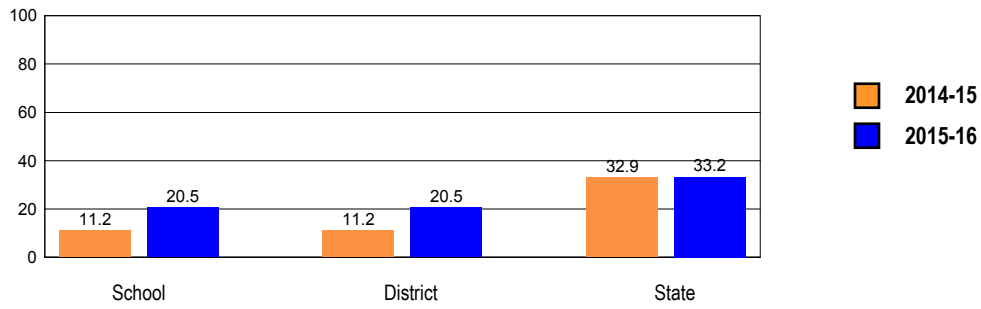
HIGH SCHOOL 6-YEAR GRADUATION RATE														
	Gender			Race / Ethnicity							LEP	Migrant	Students with Disabilities	Economically Disadvantaged
	All	Male	Female	White	Black	Hispanic	Asian	Native Hawaiian/Pacific Islander	American Indian	Two or More Races				
School	93.8	92.8	95.0	93.0	88.8	96.8	100.0			91.6	95.4		73.0	88.6
District	93.8	92.8	95.0	93.0	88.8	96.8	100.0			91.6	95.4		73.0	88.6
State	88.2	86.0	90.6	91.6	79.8	85.0	95.8			88.2	78.8		76.6	82.2

HIGH SCHOOL 7-YEAR GRADUATION RATE														
	Gender			Race / Ethnicity							LEP	Migrant	Students with Disabilities	Economically Disadvantaged
	All	Male	Female	White	Black	Hispanic	Asian	Native Hawaiian/Pacific Islander	American Indian	Two or More Races				
School	91.2	88.2	94.5	91.2	80.1	90.9	99.9			99.9			70.5	87.0
District	91.2	88.2	94.5	91.2	80.1	90.9	99.9			99.9			70.5	87.0
State	85.8	83.7	88.2	90.9	74.4	81.0	94.2			85.8			75.9	77.7

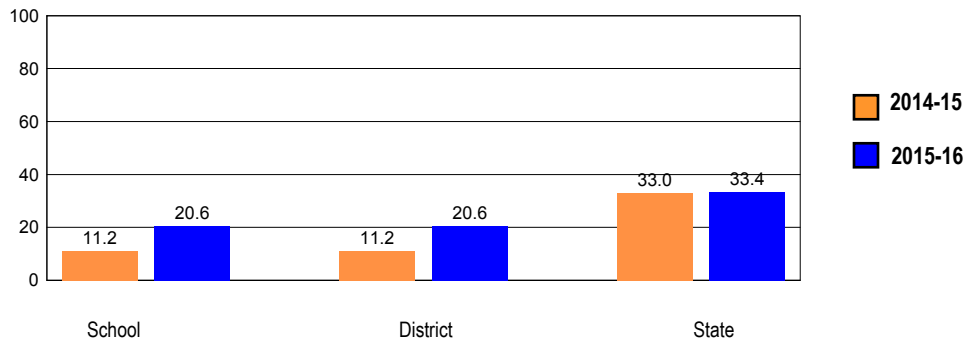
OVERALL STUDENT PERFORMANCE

These charts present the overall percentage of state test scores categorized as meeting or exceeding the PARCC expectations or DLM-AA Standards for your district, and the state.

OVERALL PERFORMANCE - ALL STATE TESTS

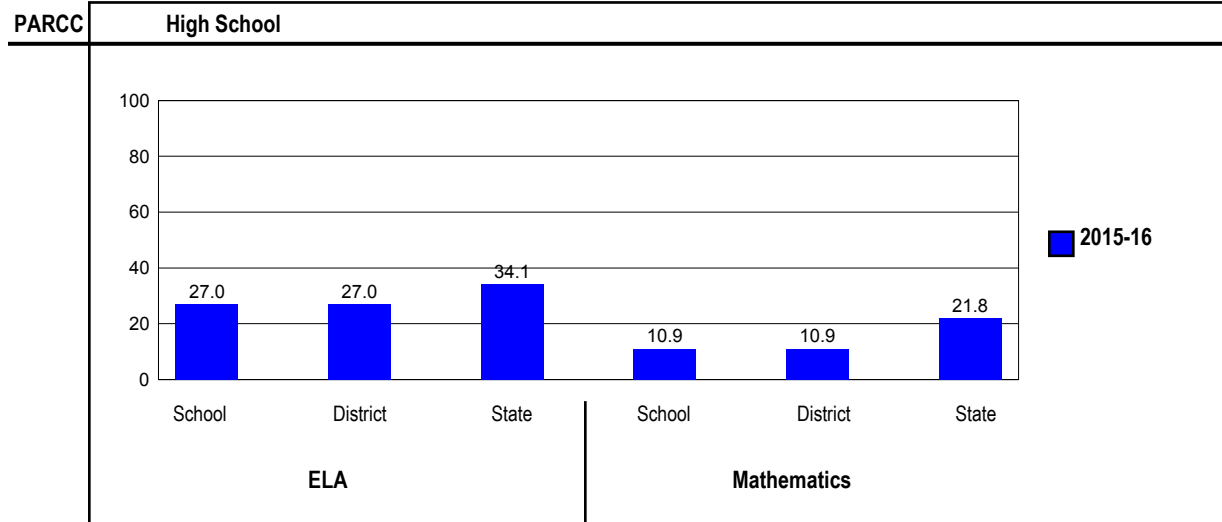


PARTNERSHIP FOR ASSESSMENT OF READINESS FOR COLLEGE AND CAREERS (PARCC)



PARCC PERFORMANCE

These charts present the overall percentage of state test scores categorized as meeting or exceeding the PARCC expectations or DLM-AA Standards for your district, and the state.



PERFORMANCE ON STATE ASSESSMENTS

The PARCC is administered to students in grade 3 through 8 and high school. The DLM-AA is administered to students in grade 3 through 8 and 11 with disabilities whose Individualized Education Programs (IEPs) indicate that participation in the PARCC would not be appropriate.

Students with disabilities have an IEP (No Child Left Behind Act). An IEP is a written plan for a child with a disability who is eligible to receive special education services under the Individuals with Disabilities Education Act.

In order to protect students' identities, test data for groups of fewer than ten students are not reported.

PERCENTAGE OF STUDENTS NOT TESTED IN STATE TESTING PROGRAMS FOR ELA															
		Gender			Racial/Ethnic Background							LEP	Migrant	Students with Disabilities	Economically Disadvantaged
		All	Male	Female	White	Black	Hispanic	Asian	Native Hawaiian/Pacific Islander	American Indian	Two or More Races				
School	*Enrollment	467	239	228	305	22	99	22	1	0	18	3	0	54	146
	Reading	1.1	0.8	1.3	1.0	4.5	1.0	0.0			0.0			3.7	0.7
District	*Enrollment	467	239	228	305	22	99	22	1	0	18	3	0	54	146
	Reading	1.1	0.8	1.3	1.0	4.5	1.0	0.0			0.0			3.7	0.7
State	*Enrollment	1,050,307	537,851	512,454	512,582	177,823	272,642	49,633	1,043	2,886	33,656	87,711	198	147,577	527,950
	Reading	2.5	2.5	2.6	2.2	3.0	2.9	2.0	3.5	3.0	2.7	2.5	1.0	3.6	2.7

* Enrollment as reported during the testing windows for grades 3 - 8 and high school.

Number of LEP Students who have attended schools in the U.S. for less than 12 months and are not assessed on the State's reading/language arts test: 0

PERCENTAGE OF STUDENTS NOT TESTED IN STATE TESTING PROGRAMS FOR MATHEMATICS															
		Gender			Racial/Ethnic Background							LEP	Migrant	Students with Disabilities	Economically Disadvantaged
		All	Male	Female	White	Black	Hispanic	Asian	Native Hawaiian/Pacific Islander	American Indian	Two or More Races				
School	*Enrollment	306	172	134	184	16	81	11	0	1	13	6	0	39	100
	Mathematics	0.7	1.2	0.0	0.0	0.0	2.5	0.0			0.0			2.6	1.0
District	*Enrollment	306	172	134	184	16	81	11	0	1	13	6	0	39	100
	Mathematics	0.7	1.2	0.0	0.0	0.0	2.5	0.0			0.0			2.6	1.0
State	*Enrollment	1,025,813	525,396	500,415	494,198	176,422	271,200	47,430	1,046	2,841	32,624	91,569	202	145,620	524,025
	Mathematics	2.5	2.5	2.6	2.1	3.2	3.0	1.5	3.5	3.0	2.6	2.0	1.0	3.8	2.8

* Enrollment as reported during the testing windows for grades 3 - 8 and high school.

Partnership for Assessment of Readiness for College and Careers (PARCC)

Each Performance Level is a broad, categorical level defined by a student's overall scale score and used to report overall student performance by describing how well students met the expectations for their grade level/course. Each Performance Level is defined by a range of overall scale scores for the assessment. There are five Performance Levels for PARCC assessments:

- Level 1: Did not yet meet expectations
- Level 2: Partially met expectations
- Level 3: Approached expectations
- Level 4: Met expectations
- Level 5: Exceeded expectations

Students performing at levels 4 and 5 met or exceeded expectations, have demonstrated readiness for the next grade level/course and, ultimately, are on track for college and careers. Performance Level Descriptors (PLDs) describe the knowledge, skills, and practices that students should know and be able to demonstrate at each Performance Level in each content area (ELA/L and mathematics), and at each grade level/course. PLDs are available at <http://avocet.pearson.com/PARCC/Home>.

High School

High School - All

Levels	ELA					Mathematics				
	1	2	3	4	5	1	2	3	4	5
School	25.7	23.3	24.1	23.7	3.3	22.5	41.7	24.8	10.9	0.0
District	25.7	23.3	24.1	23.7	3.3	22.5	41.7	24.8	10.9	0.0
State	19.2	20.9	25.8	28.3	5.8	21.5	29.5	27.2	21.1	0.7

High School - Gender

Levels	ELA					Mathematics					
	1	2	3	4	5	1	2	3	4	5	
Male	School	36.4	23.7	21.2	16.9	1.7	26.6	40.2	22.5	10.7	0.0
	District	36.4	23.7	21.2	16.9	1.7	26.6	40.2	22.5	10.7	0.0
	State	25.0	22.9	24.9	23.4	3.7	23.8	29.9	25.6	19.8	0.8
Female	School	14.3	22.8	27.2	30.8	4.9	17.3	43.6	27.8	11.3	0.0
	District	14.3	22.8	27.2	30.8	4.9	17.3	43.6	27.8	11.3	0.0
	State	13.1	18.8	26.7	33.4	8.0	19.1	29.1	28.8	22.4	0.6

High School - Racial/Ethnic Background

Levels	ELA					Mathematics					
	1	2	3	4	5	1	2	3	4	5	
White	School	25.3	23.3	25.3	22.3	3.7	23.6	41.2	23.1	12.1	0.0
	District	25.3	23.3	25.3	22.3	3.7	23.6	41.2	23.1	12.1	0.0
	State	13.5	17.5	26.2	35.1	7.8	16.0	25.5	30.2	27.3	1.0
Black	School	47.6	14.3	19.0	19.0	0.0	12.5	50.0	18.8	18.8	0.0
	District	47.6	14.3	19.0	19.0	0.0	12.5	50.0	18.8	18.8	0.0
	State	33.3	28.6	23.3	13.4	1.3	35.5	36.2	19.6	8.7	0.1
Hispanic	School	28.6	28.6	22.4	19.4	1.0	19.0	50.6	22.8	7.6	0.0
	District	28.6	28.6	22.4	19.4	1.0	19.0	50.6	22.8	7.6	0.0
	State	24.5	25.0	27.5	20.8	2.1	23.2	33.4	27.0	16.1	0.3
Asian	School	0.0	9.1	18.2	63.6	9.1	9.1	9.1	72.7	9.1	0.0
	District	0.0	9.1	18.2	63.6	9.1	9.1	9.1	72.7	9.1	0.0
	State	6.3	11.4	21.1	43.4	17.8	8.3	18.3	29.1	40.8	3.5
Native Hawaiian/Pacific Islander	School										
	District										
	State	7.2	18.0	29.7	37.8	7.2	11.2	31.8	23.4	31.8	1.9
American Indian	School										
	District										
	State	23.7	19.7	30.6	21.2	4.8	25.6	31.9	24.2	18.1	0.3
Two or More Races	School	22.2	22.2	22.2	27.8	5.6	46.2	15.4	30.8	7.7	0.0
	District	22.2	22.2	22.2	27.8	5.6	46.2	15.4	30.8	7.7	0.0
	State	16.7	19.2	25.1	30.2	8.8	21.3	27.9	26.5	23.3	0.9

High School - Students with Disabilities

Levels	ELA					Mathematics					
	1	2	3	4	5	1	2	3	4	5	
IEP	School	58.0	24.0	12.0	6.0	0.0	38.9	44.4	13.9	2.8	0.0
	District	58.0	24.0	12.0	6.0	0.0	38.9	44.4	13.9	2.8	0.0
	State	51.5	28.1	14.1	5.8	0.5	44.7	37.6	13.2	4.4	0.1
Non-IEP	School	21.7	23.2	25.6	25.9	3.7	20.3	41.4	26.3	12.0	0.0
	District	21.7	23.2	25.6	25.9	3.7	20.3	41.4	26.3	12.0	0.0
	State	15.2	20.0	27.2	31.1	6.5	18.6	28.5	29.0	23.2	0.8

High School - Economically Disadvantaged

Levels	ELA					Mathematics					
	1	2	3	4	5	1	2	3	4	5	
Free/Reduced Price Lunch	School	34.5	29.0	17.2	18.6	0.7	26.3	54.5	15.2	4.0	0.0
	District	34.5	29.0	17.2	18.6	0.7	26.3	54.5	15.2	4.0	0.0
	State	28.0	26.1	25.6	18.4	1.9	28.0	34.3	24.2	13.3	0.2
Not Eligible	School	21.6	20.6	27.3	26.0	4.4	20.7	35.5	29.6	14.3	0.0
	District	21.6	20.6	27.3	26.0	4.4	20.7	35.5	29.6	14.3	0.0
	State	12.4	16.8	25.9	36.0	8.9	15.3	25.0	30.0	28.5	1.2